

## Situation

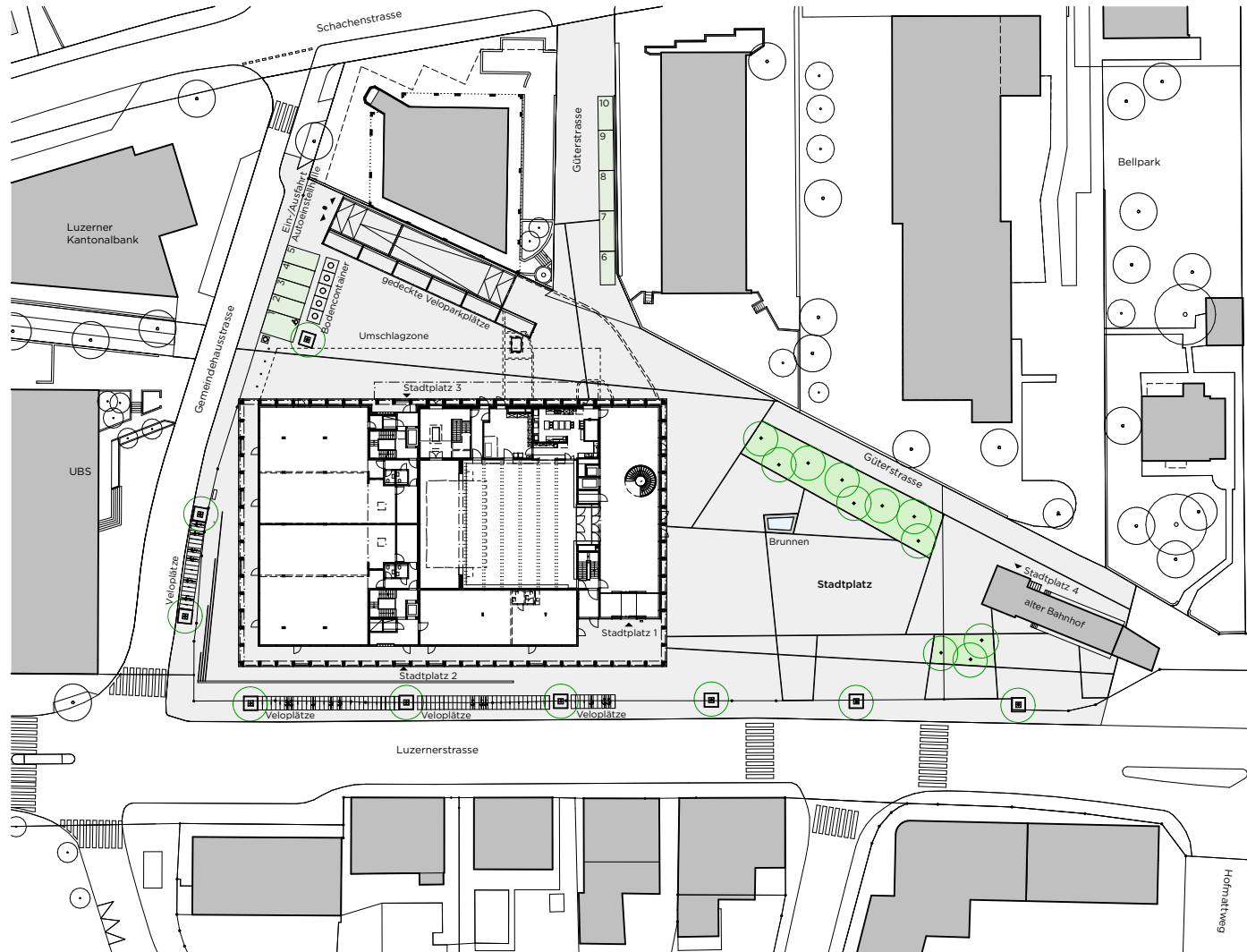
Stadtplatz 1/2/3

Stadthaus Kriens



Massstab 1:2000





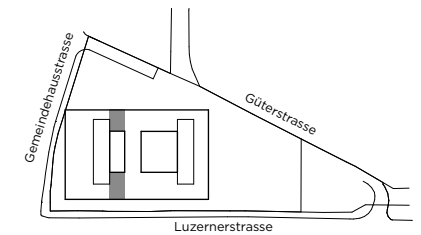
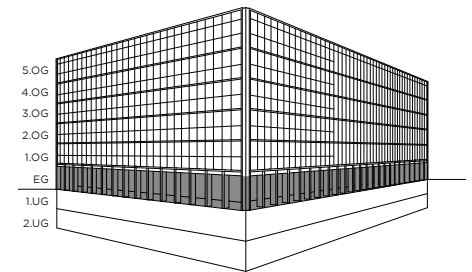
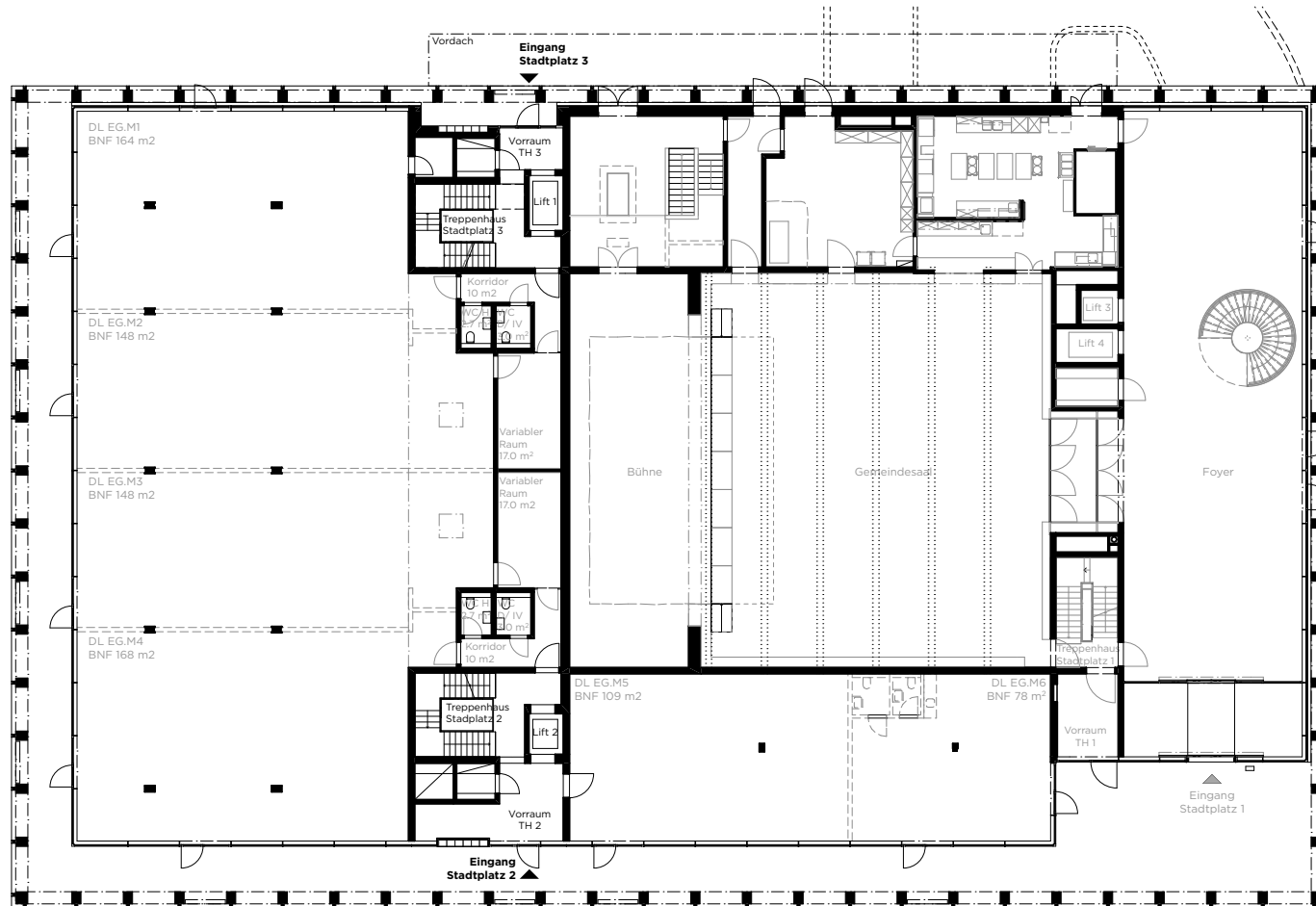
# Umgebung

Stadtplatz 1/2/3

Stadthaus Kriens

Masstab 1:1000



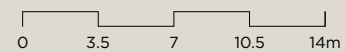


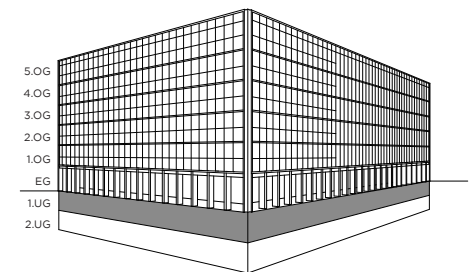
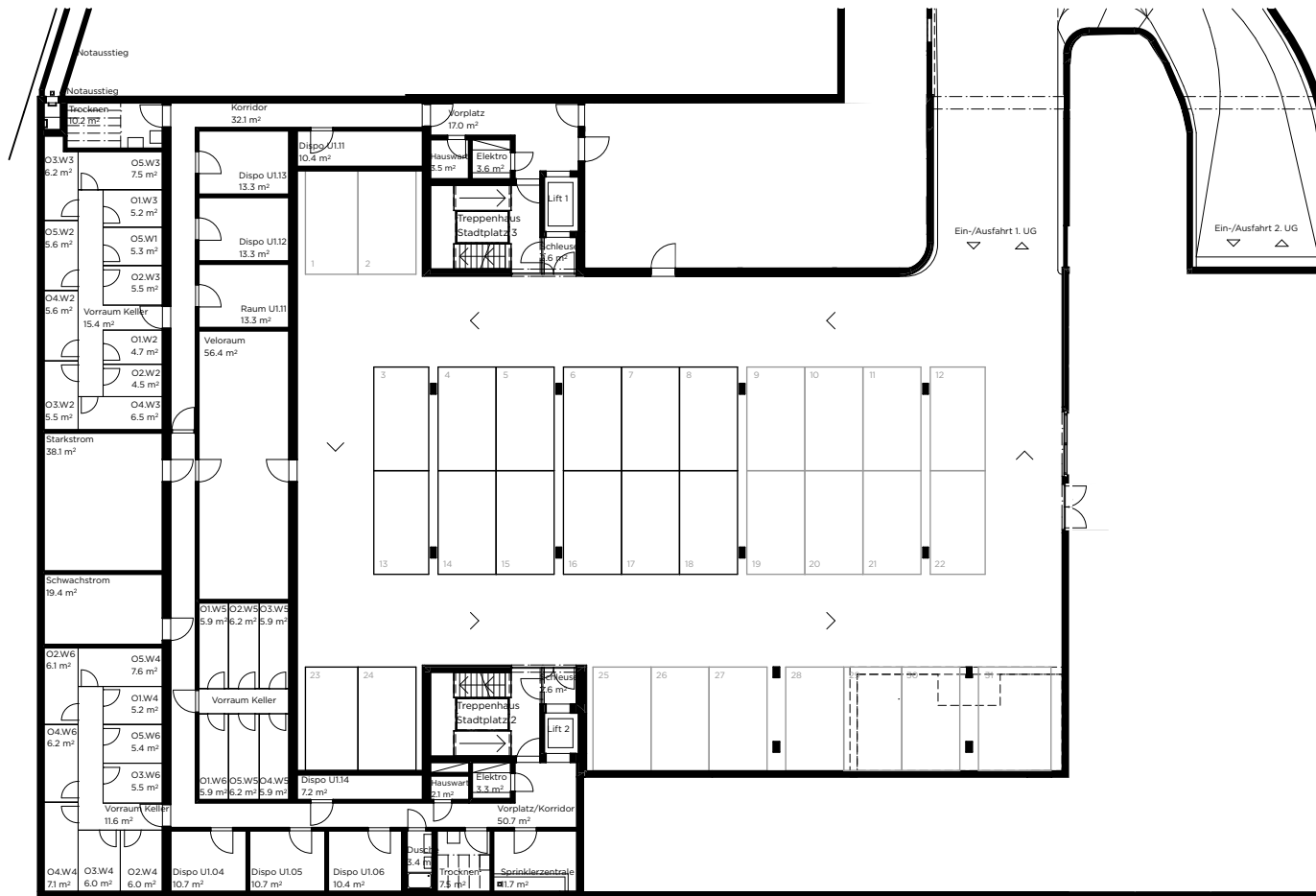
## Erdgeschoss

Stadtplatz 1/2/3

Stadthaus Kriens

Masstab 1:350





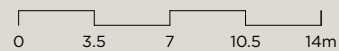
# 1. Untergeschoss

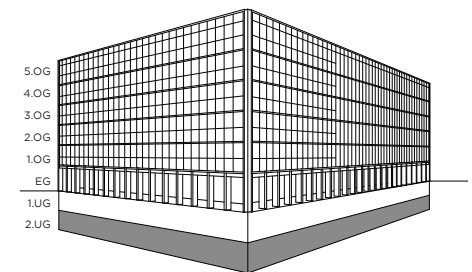
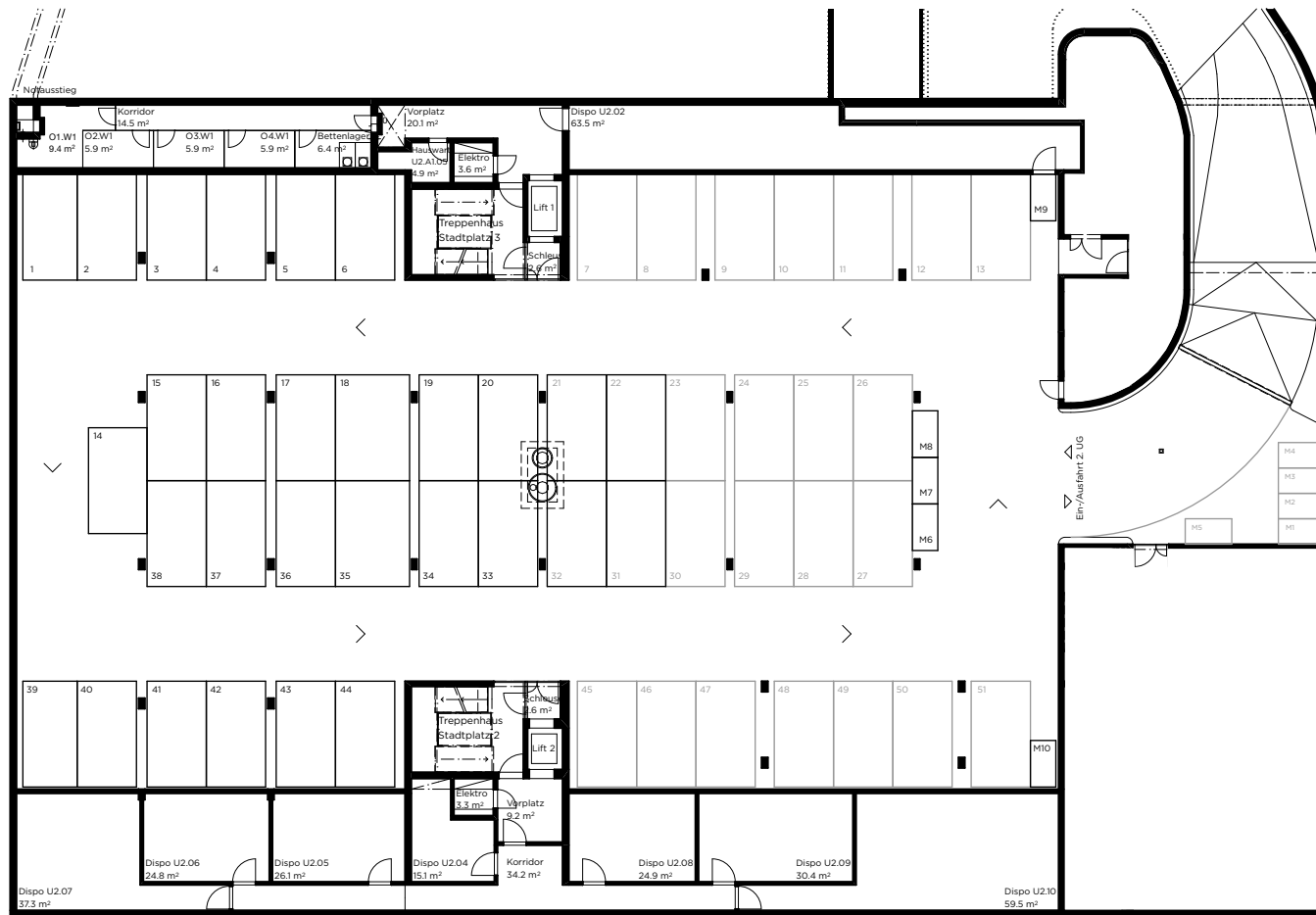
Stadtplatz 2/3

Stadthaus Kriens

Nebenträume + Autoeinstellhalle

Masstab 1:350





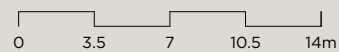
## 2. Untergeschoss

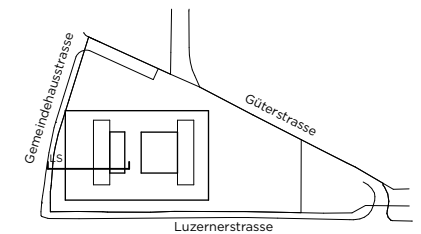
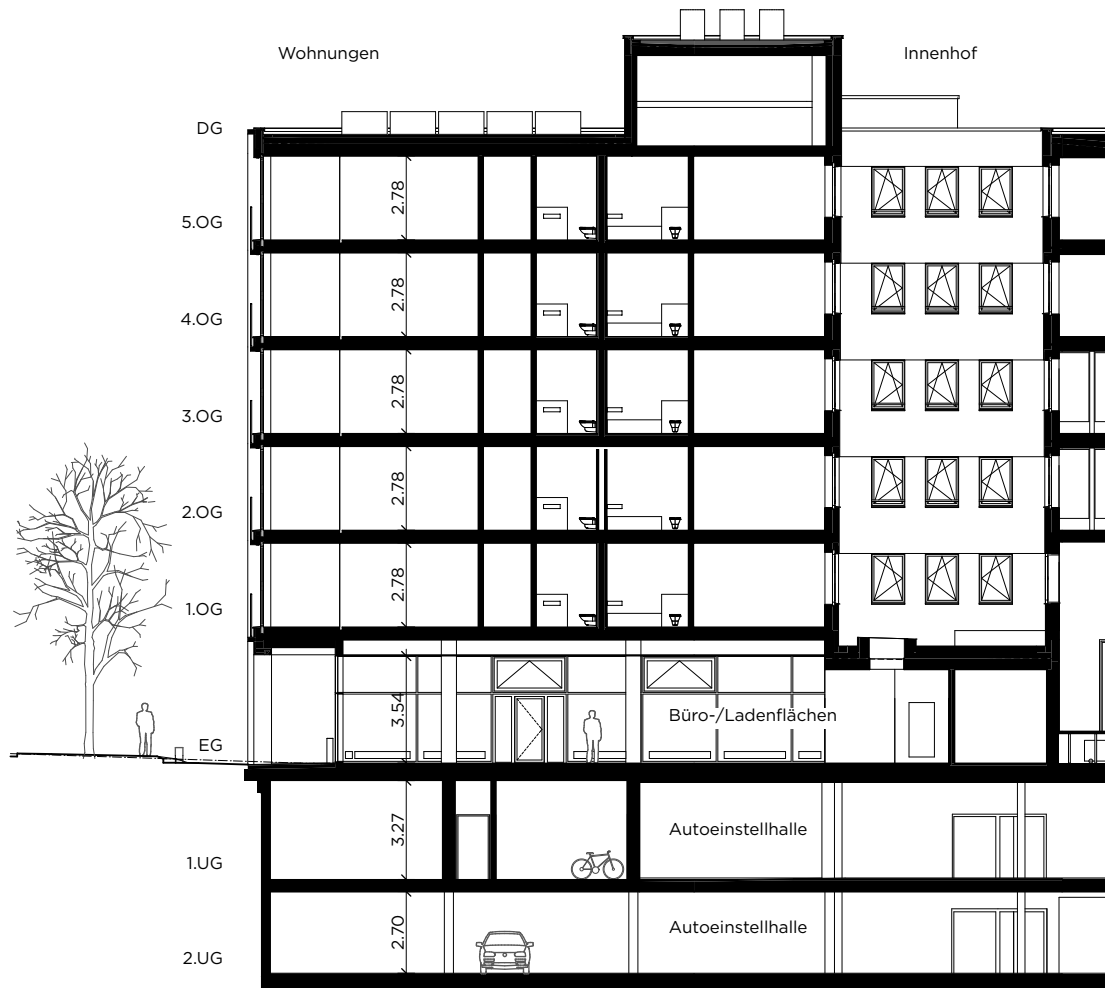
Stadtplatz 2/3

Stadthaus Kriens

Nebenträume + Autoeinstellhalle

Masstab 1:350





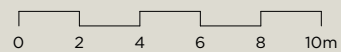
# Schnitt

Stadtplatz 2/3

Stadthaus Kriens

Längsschnitt  
Wohnungen

Masstab 1:250



25.06.2018